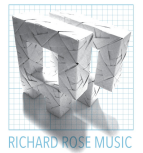


I Can't Help It

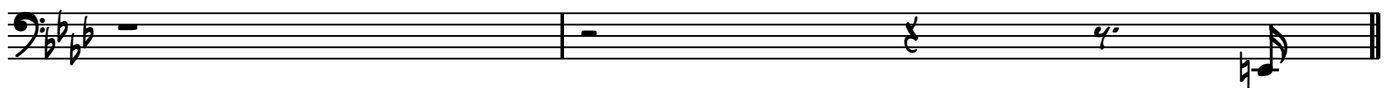
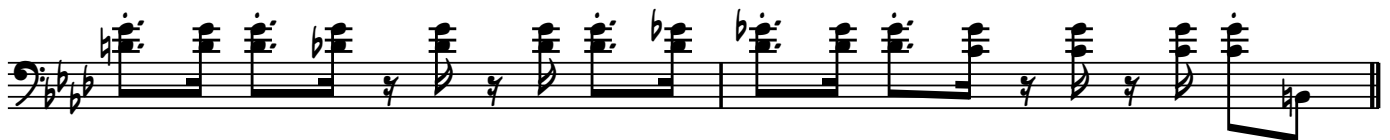
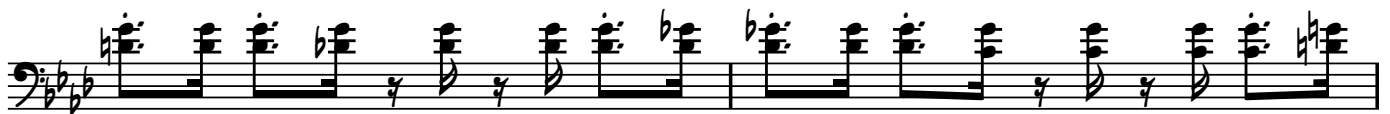


RICHARD ROSE MUSIC

Esperanza Spalding - "Radio Music Society" (2012)

♩ = 110 bpm

Bass: Esperanza Spalding
Transcribed by Richard Rose



This page contains ten staves of musical notation for a bass line. The key signature is three flats (B-flat, E-flat, A-flat), and the time signature is common time (C). The notation includes various rhythmic values, accidentals, and phrasing marks.

- Staff 1: Starts with a whole note G2, followed by eighth notes, quarter notes, and a sixteenth-note triplet.
- Staff 2: Continues with eighth notes, quarter notes, and a half note.
- Staff 3: Features a complex rhythmic pattern with eighth and sixteenth notes, some marked with 'x'.
- Staff 4: Continues the complex rhythmic pattern from Staff 3.
- Staff 5: A single staff with a long horizontal line and a fermata, indicating a rest.
- Staff 6: A series of chords, primarily triads and dyads, with some accidentals.
- Staff 7: Continues the chordal sequence from Staff 6.
- Staff 8: A single staff with a long horizontal line and a fermata, indicating a rest.
- Staff 9: Continues with eighth notes, quarter notes, and a half note.
- Staff 10: Ends with eighth notes, quarter notes, and a sixteenth-note triplet.

